

A hand-drawn map of a Paris prison layout, titled "PARIS MAP B." in the top left corner. The map depicts a complex of buildings and courtyards. At the top, an "ELEVATED TRAIN LINE" runs horizontally. On the left, a blue and orange river flows vertically, with a "PIPE TO REPAIR" crossing it. A "START" label is near the top left. A "SOULARD RENNES TUNNEL (BLOCKGOLF)" is shown as a pink structure. A "SERPENT ROUGE" building is highlighted in orange. A "GATE (CLOSED)" is marked near a "SERVICE BRIDGE". In the center, a semi-circular courtyard contains two green bushes. To the right, an orange "CHURCH (NEW CUB)" with a cross is adjacent to green-roofed buildings. Further right are orange "APARTMENTS" and a "CAFE" with a red-and-white striped awning. At the bottom, a "PAWN SHOP" is labeled. A "POLICE" car is parked on the right side. Red arrows indicate movement paths: one from the top left towards the center, one from the bottom left towards the center, and one from the bottom right towards the center. The entire map is rendered in a sketchy, hand-drawn style with various colors and textures.

A hand-drawn map of a Parisian neighborhood, likely the Marais district, showing a path through various landmarks. The map is drawn with brown ink outlines and colored areas. At the top, an 'ELEVATED TRAIN LINE' runs horizontally. A path starts at a 'START' point (marked with a red dot) and goes through a 'CHURCH (NEW LUG)' (orange building with a cross), 'APARTMENTS' (orange buildings), a 'CAFE' (orange building with a red and white striped awning), a 'PAWN SHOP' (orange building), a 'GATE (CLOSED)' (marked with a red dot), and a 'SERPENT ROUGE' (orange building). The path then goes through a 'SOULARD RENNES TUNNEL (BLOCKED OFF)' (pink area) and a 'PIPE TO REPAIR' (pink area) before reaching a 'SERVICE BRIDGE' (blue area). The path ends at a 'POLICE' station (marked with a red dot). The map also shows a 'WALL' (blue area) and a 'GATE' (marked with a red dot). The path is marked with red arrows. The map is titled 'PARIS MAP B.' in the top left corner.

A hand-drawn map of a Parisian neighborhood, likely the Marais district, showing a path through various landmarks. The map is drawn in a sketchy, artistic style with watercolor-like textures. At the top, an 'ELEVATED TRAIN LINE' runs horizontally. Below it, a 'START' point is marked with a red arrow pointing towards a 'CHURCH (NEW LUG)' which has a cross on its roof. To the right of the church are 'APARTMENTS' and a 'CAFE' with a striped awning. A 'PAWN SHOP' is located at the bottom center. To the left of the pawn shop is a 'SERPENT ROUGE' building. Further left is a 'GATE (CLOSED)' and a 'SERVICE BRIDGE' over a river. A 'PIPE TO REPAIR' is shown crossing the river. A 'SOULARD RENNES TUNNEL (BLOCKED OFF)' is also indicated. The map includes various buildings, streets, and a 'POLICE' station at the bottom right. Red arrows indicate a path starting from the church, going through the apartments, around the central area, and towards the river.

A hand-drawn map of a Parisian neighborhood, likely the Marais district, showing a path through various landmarks. The map is drawn with brown ink outlines and colored areas. At the top, an 'ELEVATED TRAIN LINE' runs horizontally. Below it, a green area represents a park or garden. To the left, a blue and orange river flows vertically, with a 'PIPE TO REPAIR' indicated. A path starts at a 'START' point, goes through a 'SOULARD RENNES TUNNEL (BLOCKED OFF)', and then through a 'SERPENT ROUGE' building. The path continues through a 'GATE (CLOSED)' and a 'PAWN SHOP'. Other landmarks include a 'CHURCH (NEW CURE)', 'APARTMENTS', a 'CAFE', and a 'POLICE' station. Red arrows indicate the direction of travel along the path. The map is titled 'PARIS MAP B.' in the top left corner.

A hand-drawn map of a Parisian neighborhood, likely the Marais district, showing a path through various landmarks. The map is drawn with brown ink for buildings and streets, blue for water, and green for parks. A red line with arrows indicates a path starting from a 'START' point near a 'PIPE TO REPAIR' and a 'SOULARD RENNES TUNNEL (BLOCKED OFF)'. The path leads through a 'SERPENT ROUGE' building, past a 'GATE (CLOSED)', and through a 'PAWN SHOP'. It then goes past a 'CHURCH (NEW LUG)' and 'APARTMENTS' to a 'CAFE'. A 'POLICE' station is also shown. An 'ELEVATED TRAIN LINE' runs along the top. A 'SERVICE BRIDGE' is located near the 'SERPENT ROUGE' building. The map is titled 'PARIS MAP B.' in the top left corner.

A hand-drawn map of a Parisian neighborhood, likely the Marais district, showing a path through various landmarks. The map is drawn with brown ink for buildings and streets, blue for water, and green for parks. A red line with arrows indicates a path starting from a 'START' point near a 'PIPE TO REPAIR' and a 'SOULARD RENNES TUNNEL (BLOCKED OFF)'. The path leads through a 'SERPENT ROUGE' building, past a 'GATE (CLOSED)', and through a 'PAWN SHOP'. It then goes past a 'CHURCH (NEW LUG)' and 'APARTMENTS' to a 'CAFE'. A 'POLICE' station is also shown. An 'ELEVATED TRAIN LINE' runs along the top. A 'SERVICE BRIDGE' is located near the 'SERPENT ROUGE' building. The map is titled 'PARIS MAP B.' in the top left corner.

A hand-drawn map of a Parisian neighborhood, likely the Marais district, showing a path and various landmarks. The map is drawn on a grid of streets. Key features include:

- Top:** An "ELEVATED TRAIN LINE" runs horizontally across the top.
- Left:** A blue river, the "SEINE", flows vertically. A "SERVICE BRIDGE" crosses it. A "PIPE TO REPAIR" is marked with a red arrow pointing left.
- Center:** A large, semi-circular building with a "GATE (CLOSED)" is the central focus. To its left is an orange building labeled "SERPENT ROUGE". To its right is a green building labeled "CHURCH (NEW LEVEE)".
- Right:** An orange building labeled "APARTMENTS" and a small building labeled "CAFE" are shown.
- Bottom:** A "PAWN SHOP" is located near the bottom center. A "POLICE" car is parked on the right side.
- Path:** A red arrow points from the "START" at the top left, through the "SERPENT ROUGE" building, and towards the "CHURCH (NEW LEVEE)".
- Other Labels:** "SOULARD RENNES TUNNEL (BLOCKED OFF)" is written near the top left. "GATE" is written near the bottom left.

A hand-drawn map of a Parisian neighborhood, likely the Marais district, showing a path through various landmarks. The map is drawn in a sketchy, artistic style with colored washes. At the top, an 'ELEVATED TRAIN LINE' runs horizontally. Below it, a 'START' point is marked with a red arrow pointing towards a 'CHURCH (NEW LUG)' which has a cross on its roof. To the right of the church are 'APARTMENTS' and a 'CAFE' with a striped awning. A 'PAWN SHOP' is located at the bottom center. To the left of the pawn shop is a 'SERPENT ROUGE' building. Further left is a 'GATE (CLOSED)' and a 'SERVICE BRIDGE' over a blue river. A 'PIPE TO REPAIR' is shown crossing the river. A 'SOULARD RENNES TUNNEL (BLOCKED OFF)' is also indicated. The map is filled with grey and brown washes representing buildings and streets, with green areas representing parks or gardens. Red arrows indicate the path through the neighborhood.

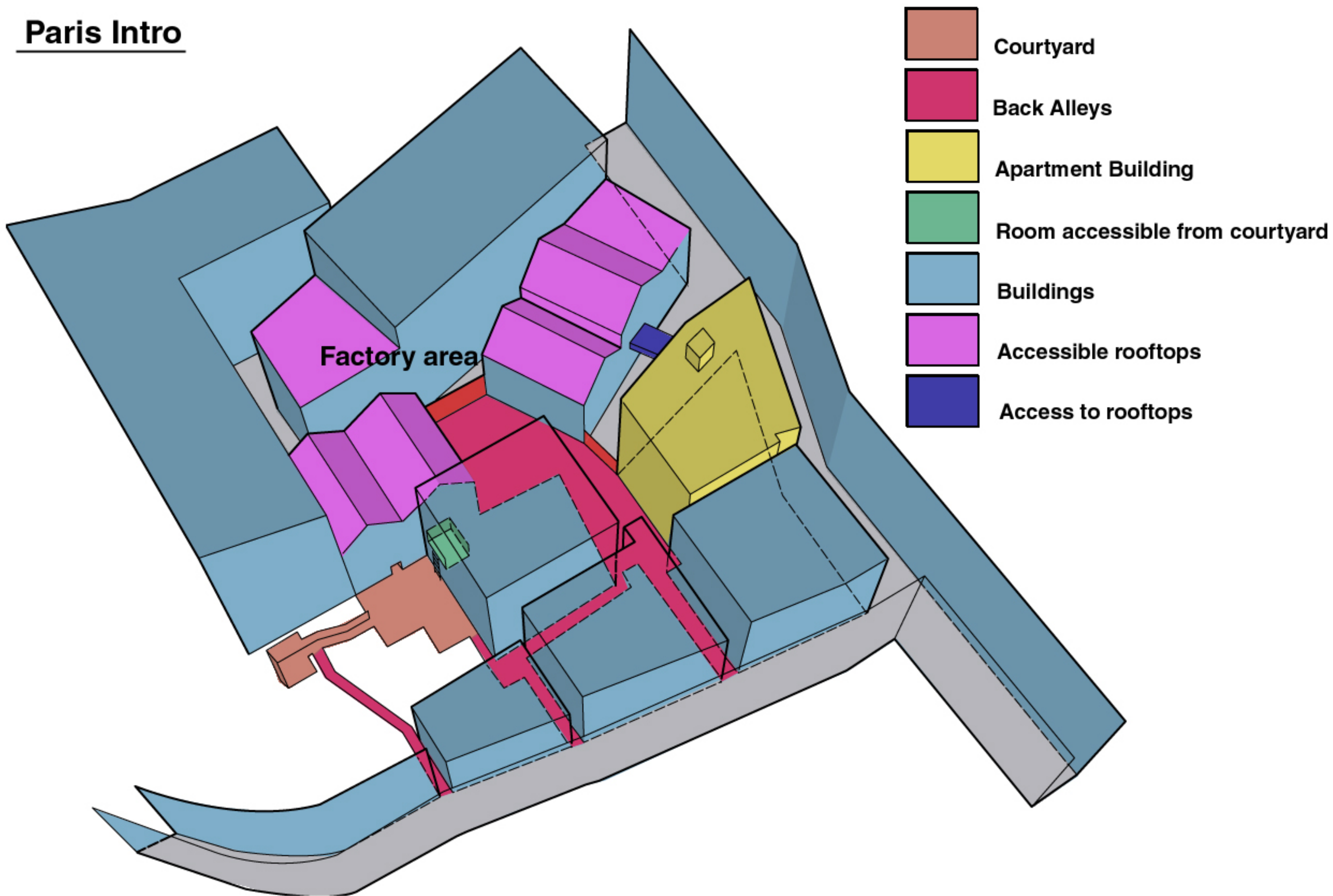
A hand-drawn map of a Parisian neighborhood, likely the Marais district, showing a path through various landmarks. The map is drawn in a sketchy, artistic style with watercolor-like washes. At the top, an 'ELEVATED TRAIN LINE' runs horizontally. Below it, a 'START' point is marked with a red arrow pointing towards a 'CHURCH (NEW LUG)' which has a cross on its roof. To the left of the church is a green area labeled 'GARDEN'. To the right is an orange area labeled 'APARTMENTS'. Further right is a 'CAFE' with a red and white striped awning. At the bottom center is a 'PAWN SHOP'. To the left of the pawn shop is a 'GATE (CLOSED)' and a 'SERVICE BRIDGE'. A blue river, the 'SERPENT RIVER', flows along the left side of the map. A pink path labeled 'PIPE TO REPAIR' runs along the river. A 'SOULARD RENNES TUNNEL (BLOCKED OFF)' is also indicated. Red arrows show a path starting from the 'START' point, going through the church, past the apartments, around the cafe, and then towards the river. The map is titled 'PARIS MAP B.' in the top left corner.

A hand-drawn map of a Parisian neighborhood, likely the Marais district, showing a path through various landmarks. The map is oriented with a large, semi-circular structure at the top, possibly a bridge or a large building, labeled "ELEVATED TRAIN LINE" at the top edge. A path starts at a "START" point on the left, marked with a red arrow. The path leads through a "SOULARD RENNES TUNNEL (BLOCKGOLF)" and a "PIPE TO REPAIR" area. It then passes a "SERPENT ROUGE" building, a "GATE (CLOSED)", and a "PAWN SHOP". The path continues through a "CHURCH (NEW LEVE)" and "APARTMENTS" before ending at a "CAFE" and a "POLICE" station. The map includes various other details like "WALL", "SERVICE BRIDGE", and "GATE". The drawing is done in a sketchy, hand-drawn style with various colors like blue, orange, and green used to highlight different areas.

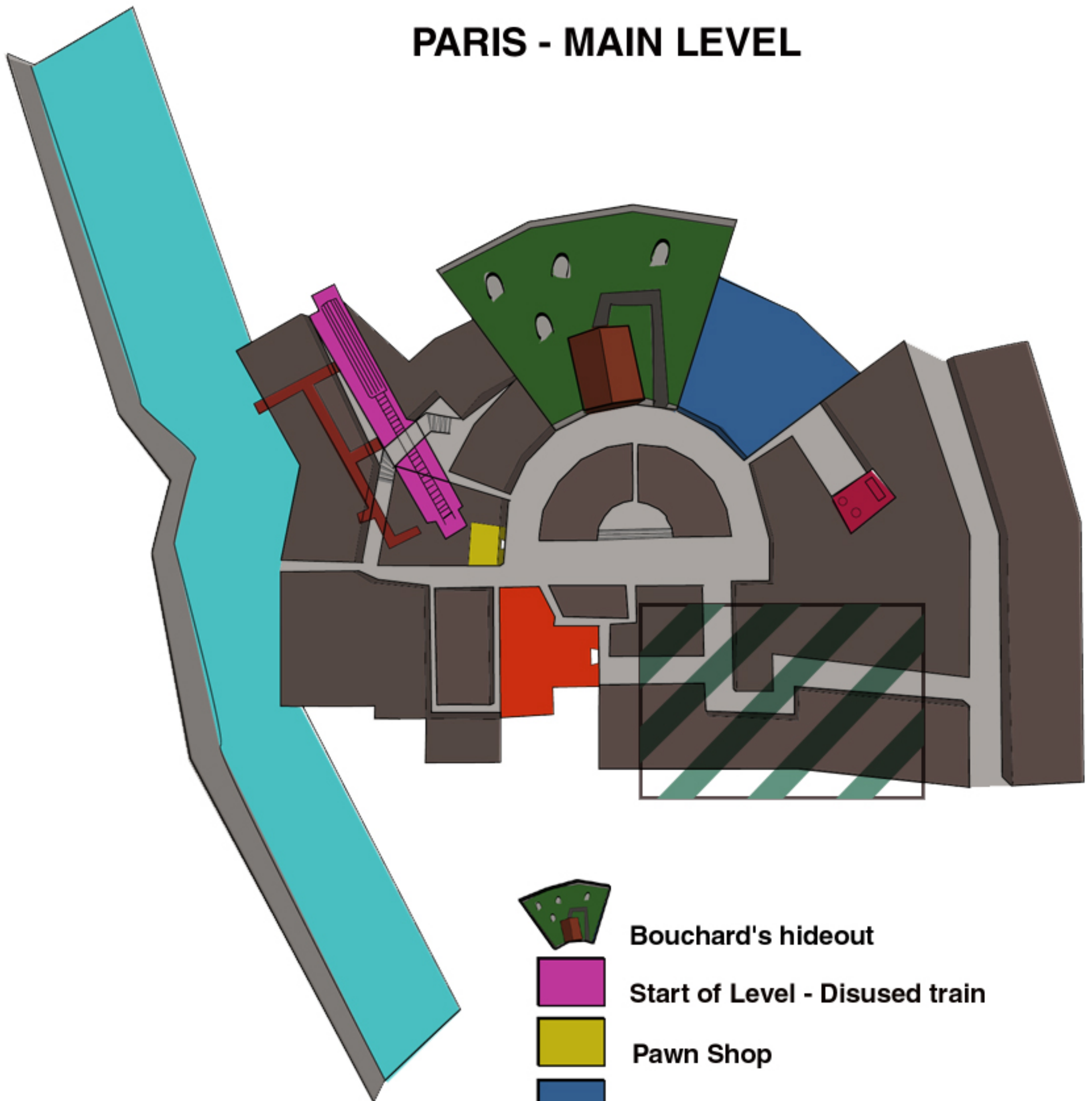
A hand-drawn map of a Parisian neighborhood, likely the Marais district, showing a path through various landmarks. The map is drawn in a sketchy, artistic style with watercolor-like washes. At the top, an 'ELEVATED TRAIN LINE' runs horizontally. Below it, a 'START' point is marked with a red arrow pointing towards a 'CHURCH (NEW LEVEE)' which has a cross on its roof. To the right of the church are 'APARTMENTS' and a 'CAFE' with a striped awning. A 'PAWN SHOP' is located at the bottom center. To the left of the pawn shop is a 'SERPENT ROUGE' building. Further left is a 'GATE (CLOSED)' and a 'SERVICE BRIDGE' over a river. A 'PIPE TO REPAIR' is shown crossing the river. A 'SOULARD RENNES TUNNEL (BLOCKED OFF)' is also indicated. The map includes various buildings, streets, and a 'POLICE' station at the bottom right. Red arrows indicate a path starting from the 'START' point, going through the church, past the apartments, around the central area, and then towards the river and bridge.

[illegible]

Paris Intro



PARIS - MAIN LEVEL



Bouchard's hideout



Start of Level - Disused train



Pawn Shop



Appartments



Cafe



le Serpant Rouge



Escape route to the river



Pawnable item area

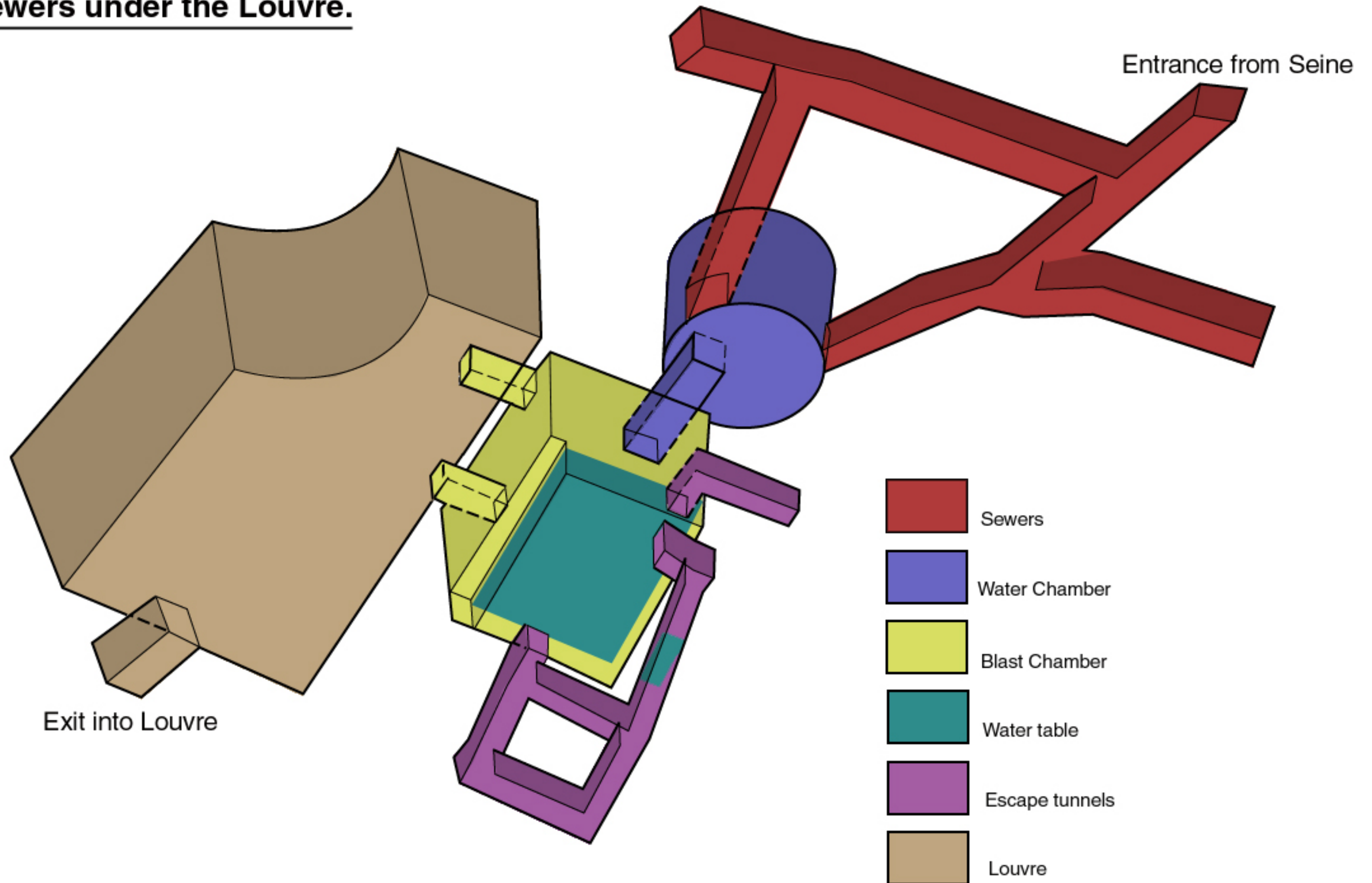


Buildings

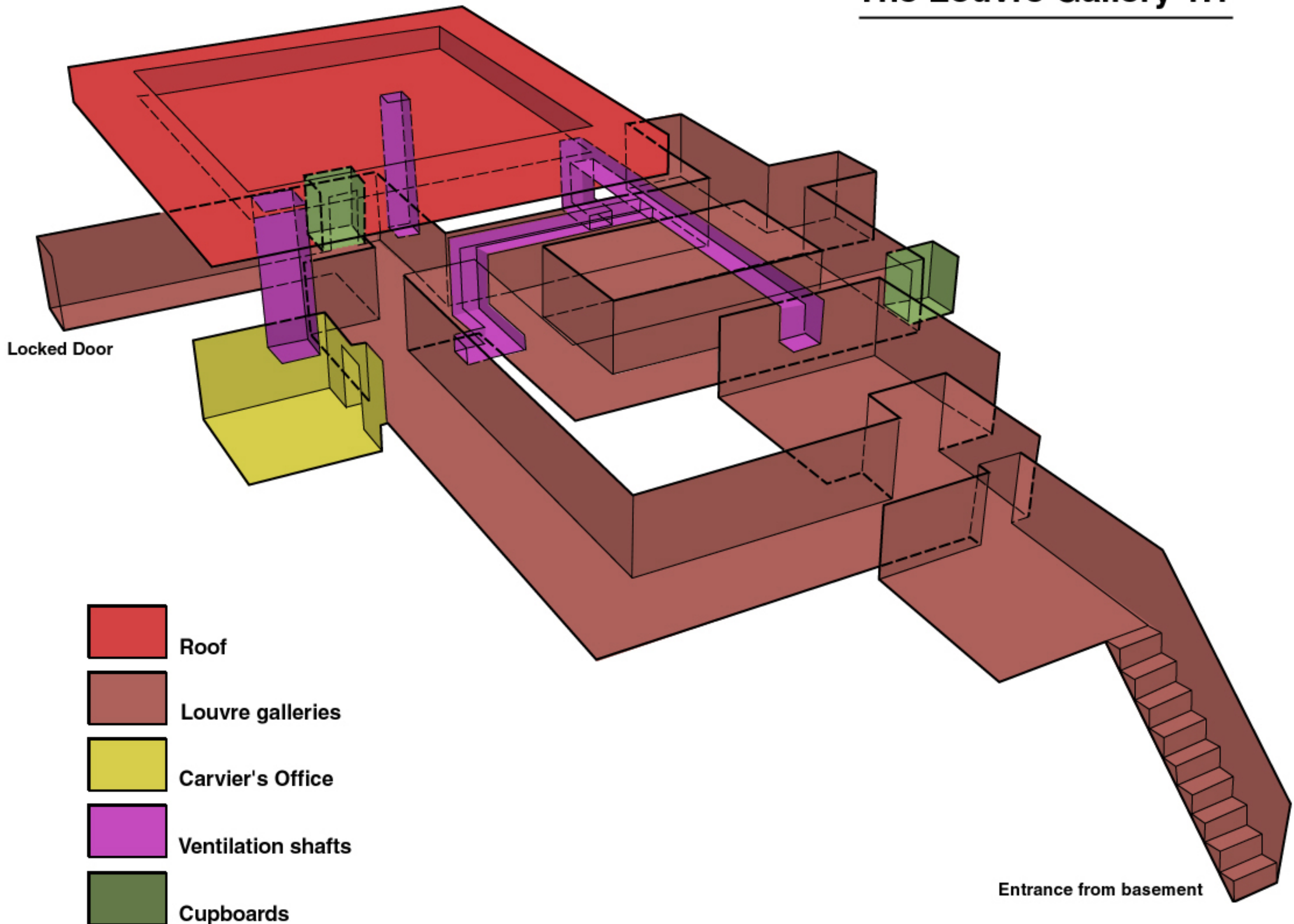


Le Seine

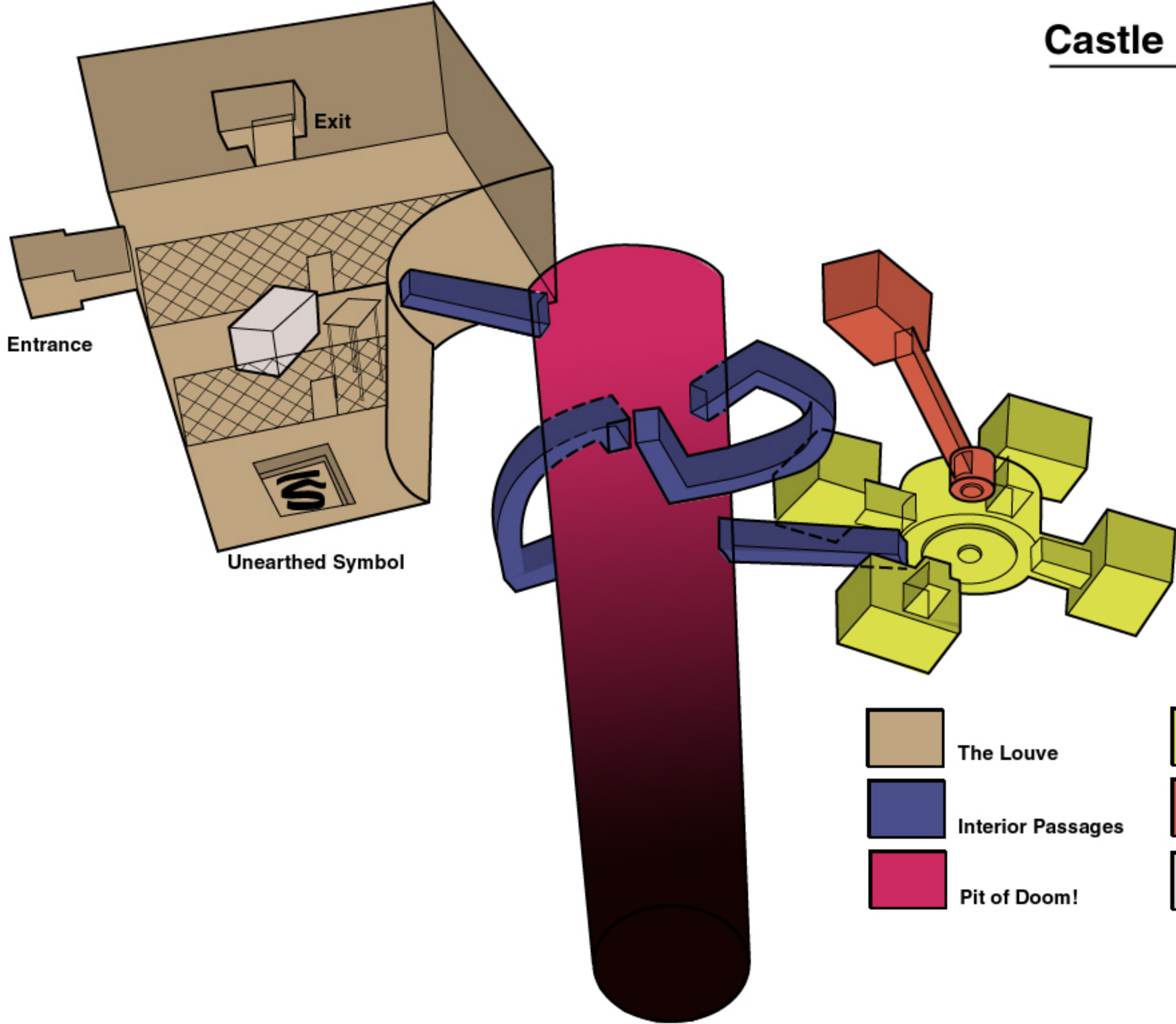
Sewers under the Louvre.



The Louvre Gallery 1.1



Castle under the Louvre



The Louve



Interior Passages



Pit of Doom!



Chamber of the Four Elements

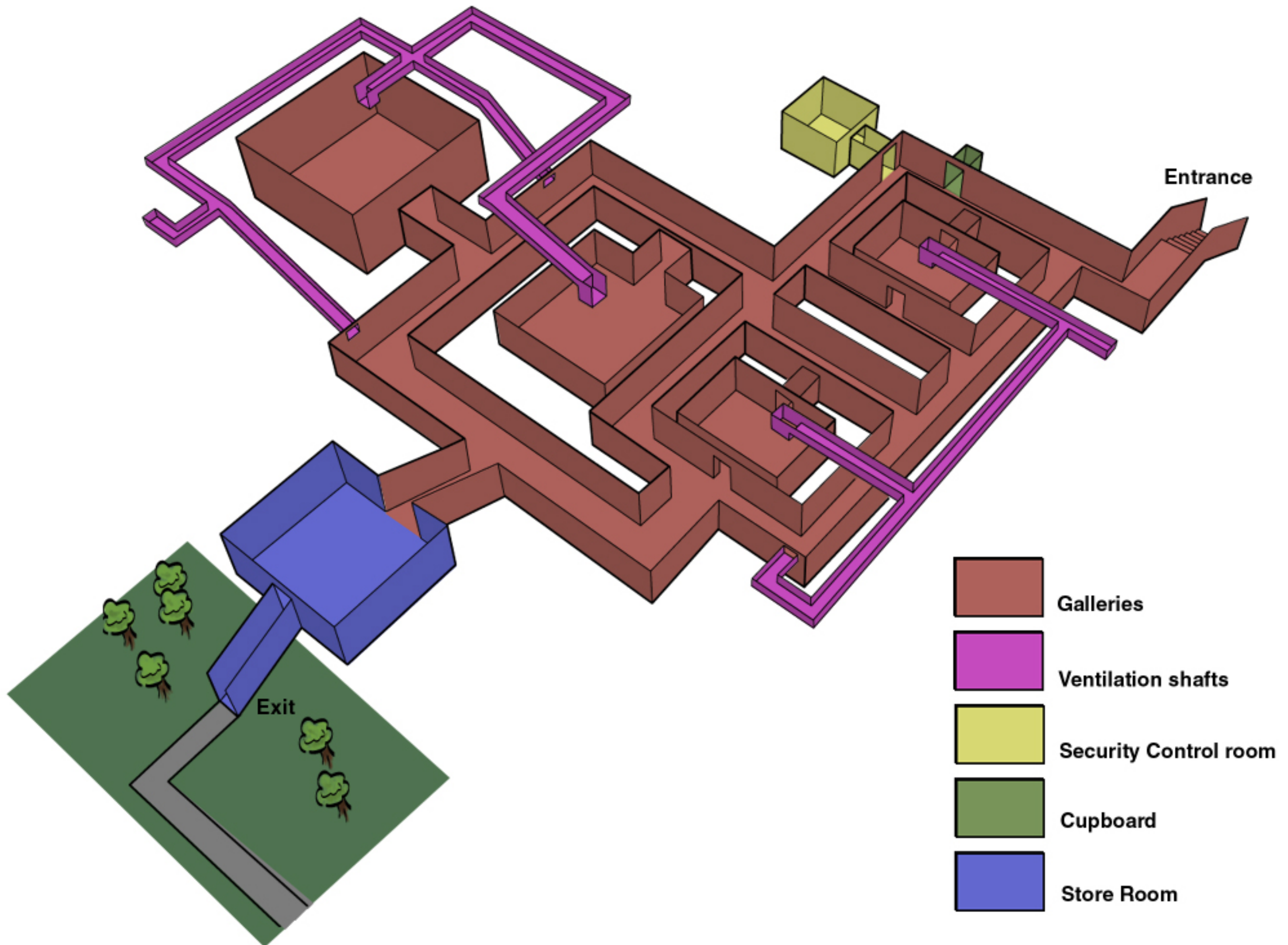


The Crypt of Brother Obscura

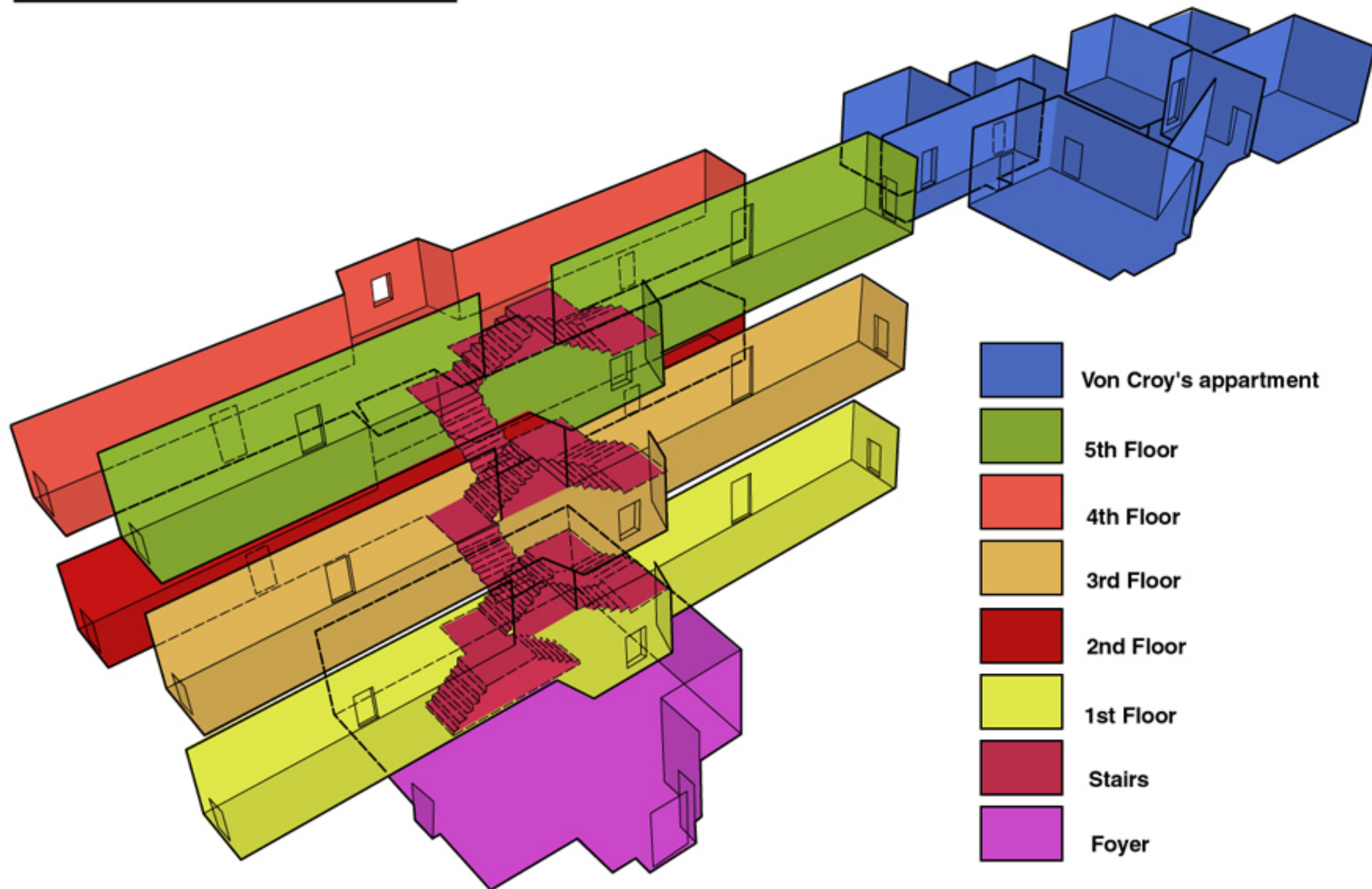


Archeologists port-a-cabin

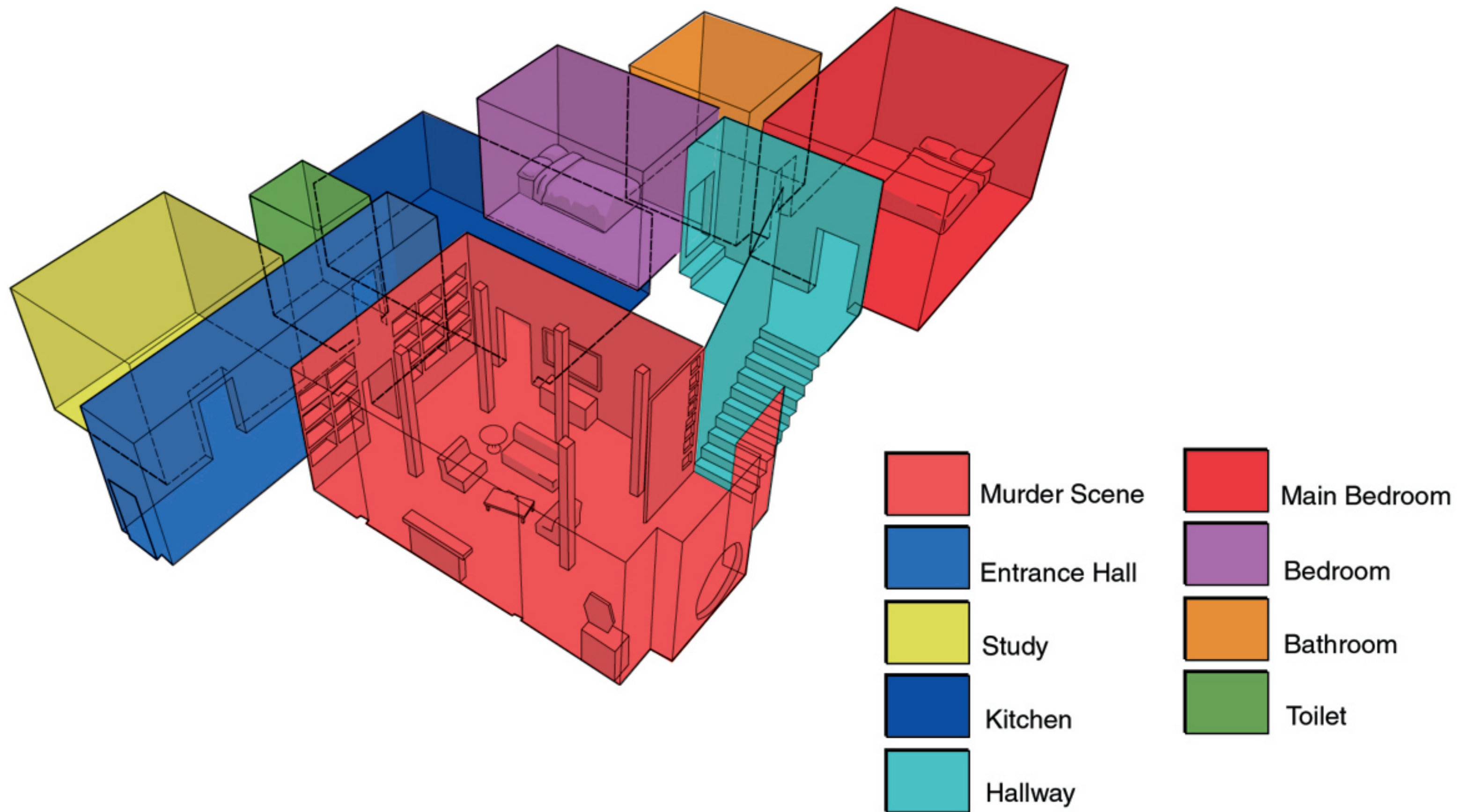
The Louvre Gallery 1.2.



Apartment Building



Von Croy's Apartment



Bio-Dome Template Map

